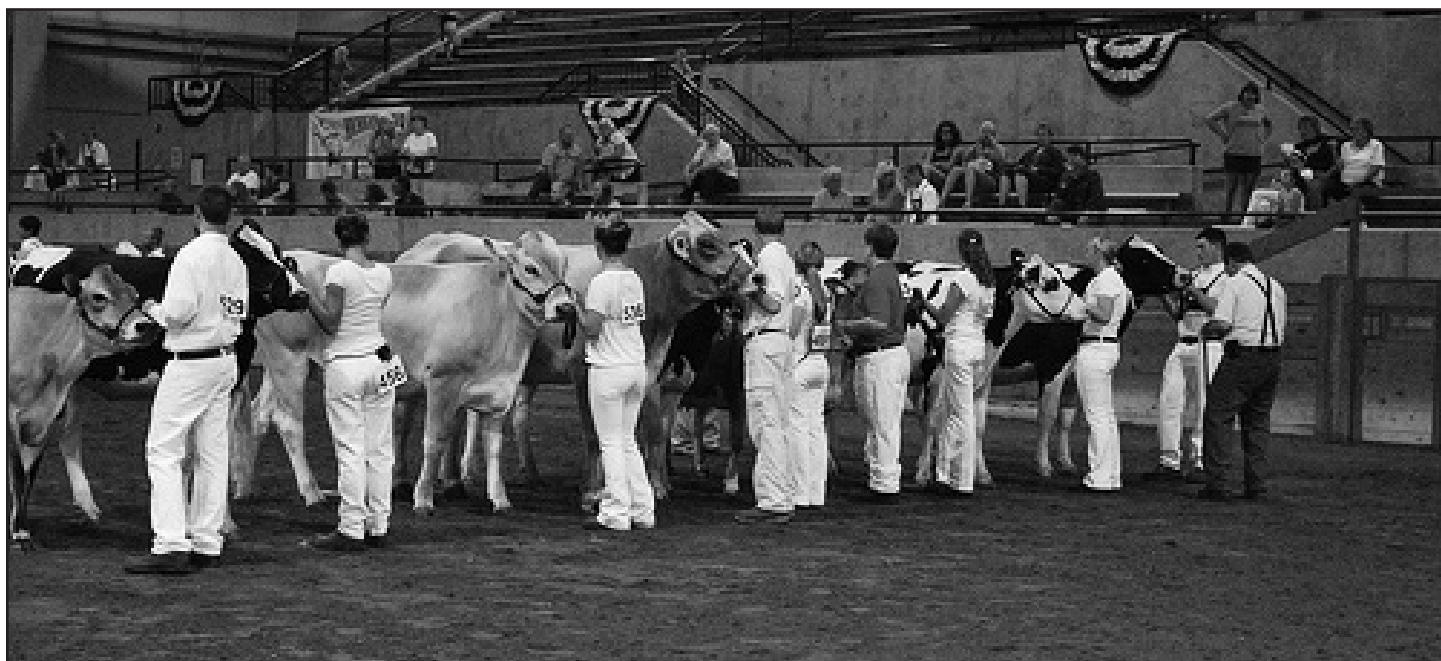


2017 Michigan Dairy Expo

SHOW BOOK



July 17-21, 2017

Michigan 4-H Youth Dairy Days
and
Michigan Dairy Breed Shows

Schedule of Events

Monday, July 17

1:00 p.m. – 5:00 p.m.

Cattle move-in begins. Dairy Days exhibitors must have cattle in place by Monday at 5:00 p.m. Open show exhibitors are encouraged to arrive Monday and must be in place by Wednesday at 7:00 a.m. NO early arrival allowed. NO MOVE-IN will be allowed Tuesday afternoon.

1:00 p.m. – 4:00 p.m.

MMPA interviews – Classroom 101A

3:00 p.m.

4-H Dairy Management Contest Coaches Meeting

4:00 p.m.

4-H Dairy Management Contest

6:00 p.m.

Cattle exhibiting in Michigan Dairy Days Youth Show must be checked in to the show office before 6:00 p.m. All showmanship exhibitors must check in by this time as well.

Tuesday, July 18

7:30 a.m.

Michigan Dairy Days 4-H Youth Show (beginning with Showmanship)

2:00 p.m. - 9:00 p.m.

Please do not move-in any cattle, drive-through or unload/load out any trailers during this time.

4:30 p.m.

Michigan Dairy and Livestock Expo Sale-ambulation Reception (RSVP Event)

5:00 p.m.

All final Quiz Bowl teams must be submitted in writing to the show office by 5 p.m. If no changes are submitted, teams will be those listed on the original entry form.

5:00 p.m.

Dairy Youth Pizza Social - All Dairy Days participants are invited!!! (Show Arena – Bleacher Area)

6:00 p.m.

Michigan Dairy and Livestock Expo Sale-ambulation Auction (MSU Pavilion Sale Auditorium)

8:30 p.m. – 9:00 p.m.

State Dairy Judging Coaches Meeting - Classroom B

Wednesday, July 19

7:00 a.m.

Open Show Cattle must be in place

7:45 a.m. – 3:00 p.m.

State Youth Dairy Judging Contest

9:30 a.m. – 2:30 p.m.

The Great Dairy Adventure- Consumer Education Day

11:00 a.m. – 4:00 p.m.

Open Show Cattle - Breed Association Entry Check-in at Classroom D

Cattle exhibiting in the Open Breed Shows must check their registration papers in by 4:00 p.m.

4:00 p.m.

Close of ALL Open Show Entries

3:30 p.m.

Jr Jersey Meeting

5:00 p.m.

Jr Holstein Meeting

6:00 p.m.

The Party Barn will include games and fun for youth!! (Junior Show Shirts will be distributed.)

8:30 p.m.

Ice Cream Social

8:30 p.m.

All-Michigan Open Show Exhibitor's Meeting (Classroom C)

Thursday, July 20

7:30 a.m.

Dairy Youth Quiz Bowl Coaches Meeting

8:30 a.m.

Dairy Youth Quiz Bowl Contest

5:30 p.m.

Michigan Dairy Expo Celebration Picnic followed by Dairy Youth and 4-H Recognition Program

8:00 p.m.

32nd Annual Michigan Holstein Futurity Ring 1

9:00 p.m.

Ice Cream Social Celebrating Michigan's Dairy Industry

Friday, July 21

8:30 a.m.

MICHIGAN DAIRY EXPO SHOWMANSHIP

Ring 1 Holstein Ring 2 Jersey Ring 3 - All Other Breeds

9:15 a.m.

MICHIGAN DAIRY EXPO HEIFER CLASSES - ALL BREEDS

** All heifers, dry cows and bulls will show in the morning.

Ring 1 - Holstein Ring 2 - Jersey

Ayrshire, Brown Swiss, Guernsey, Milking Shorthorn, Red & White, (starting with the breed with largest entry numbers will follow Holstein and/or Jersey in the first available ring.***)

~11:30 a.m.

MICHIGAN DAIRY EXPO SUPREME JUNIOR CHAMPION (conclusion of the heifer breed shows)

*Supreme Junior Champion of the Junior Show will be followed by Supreme Junior Champion of the Open Show.

~ 12:00 p.m.

All-Breeds Pee-Wee Showmanship

1:00 p.m.

MICHIGAN DAIRY EXPO MILKING COW CLASSES - ALL BREEDS

Ring 1 Holstein Ring 2 Jersey

Ayrshire, Brown Swiss, Guernsey, Milking Shorthorn, Red & White (starting with the breed with largest entry numbers will follow Holstein and/or Jersey in the first available ring.***)

~3:00 p.m.

MICHIGAN DAIRY EXPO SUPREME CHAMPION

*Supreme Grand Champion of the Junior Show will be followed by Supreme Grand Champion of the Open Show.

**Open show start times are subject to change depending on the number of entries.

*** Time and order of color breed shows may be adjusted depending on final entry numbers.

Michigan Dairy Expo Official Judges

Dairy Days 4-H Youth Show Judges: Jeff Meyer and Mike Lortie

Open Breed Show Judges: Jeremy Adams (Holsteins), Phillip Topp (Jerseys)

Michigan Dairy Expo

Dairy Cattle Show General Rules and Regulations

For general purposes of this book, "Open Show" or "All-Michigan" breed show refers to the breed association - sponsored shows held on Friday of the Michigan Dairy Expo. The "Youth Show" refers to the Michigan Dairy Days Youth Show held on Tuesday.

Regulations Common to All Events

Before attending Dairy Days and the Michigan Dairy Expo, participants, leaders and staff should become familiar with the following regulations.

1. Michigan Dairy Expo Manager reserves the right to reject entirely, or accept conditionally, any entry or application for entry, or to withdraw classification and prizes in any department, upon the closing of entries whenever it, in its sole judgment, determines that such action is in the best interests of the Michigan Dairy Expo.
2. Authority - The MI Dairy Expo Manager, breed superintendents and breed secretaries have the authority to make all decisions within divisions in accordance with these rules and regulations. All protests and complaints should be written, signed and lodged with the Michigan Dairy Expo Manager. If any person feels aggrieved by a decision of the Manager, breed superintendents or breed secretaries, that person may appeal that decision to the dairy youth programming committee and/or the Michigan PDCA. Each breed association is responsible for operating their respective shows and enforcing the rules. Michigan PDCA/ MDE manager provides general oversight, premiums, etc. related to the Michigan Dairy Expo.
3. Liability - It is understood that all event participants, their principals and agents or employees agree to make no claim against Michigan Dairy Expo, any official of the event or anyone acting by, for or through them, for loss, damage or injury to any property, animal or person resulting from any cause. All animals, exhibits, grounds and buildings will be under the entire control and management of Michigan State University, but neither Michigan State University nor any of its officials will in any case be held responsible for any loss or damage that may occur to any participating youth member or open show exhibitor, their principals and agents, or employees.
4. Fraud - The management reserves the right to withhold awards in any case in which it appears that the regulations have not been complied with, or that fraud or deception has been practiced or attempted.

Conduct Policy

1. Anyone participating in a state-sponsored 4-H or youth activity who is caught in the act of theft or vandalism, or caught with illegal drugs or alcohol, or who is involved in other such offenses, will immediately be sent home at his or her own expense. If it is determined by the 4-H staff, leaders or persons in charge of the activity that the offense warrants it, the offender will be turned over to the proper authorities.
2. Security of possessions is each youth's responsibility. MSU is not responsible for lost items.

Cleanliness and neatness of exhibit

Please follow these guidelines:

- * Clean cows-washed and brushed
- * Neat feeding area- neatly stacked hay, straw, grain bags, etc.
- * Wheelbarrow, if with exhibit, kept emptied.
- * Neat tack storage- stored brushes, combs, halters, etc.
- * Aisles swept.
- * Water fountain, hoses or outlet neat and as dry as possible.
- * Neat, clean and well cared for in appearance.
- * Exhibitor behavior - Courteous, polite, cooperative.

Stalls

1. Stalls will be assigned only to bona fide exhibitors. Extra space for tack, feed, etc. will be limited by Show Coordinator.
2. Unless an animal is entered in the Michigan Dairy Days Youth Show or one of the breed shows held during Michigan Dairy Expo, it may not occupy a stall or pen until all exhibition animals are accommodated. A stalling fee will be charged.
3. Exhibitors not arriving by designated time will forfeit fees paid and reserved stalls will be subject to reassignment. In case of unavoidable delay or failure to attend the show, proper notification should be given to the Michigan Dairy Expo Show Office (517-432-0665).

MILKING PARLOR

The Michigan Dairy Expo will have a milking parlor for the convenience of dairy exhibitors. All exhibitors are welcome to use it. All exhibitors of cows in milk are required to complete and sign the rbst form included in this premium book. As a reminder, the milking parlor is a Grade A inspected parlor. All milk is sold that is milked or dumped into the tank from exhibitors that milk in their stalling area. NO TREATED MILK MAY BE DUMPED IN THE BULK TANK. Money generated from the sale of the milk continues to offset the cost of the show.

1. Milk from each exhibitor's cattle will be tested for the presence of antibiotics periodically throughout the show. RANDOM SAMPLES may be taken. We are attempting to make it possible that all milk going through the parlor be sold. We solicit your cooperation in only bringing milk of acceptable quality to the parlor.
2. All bulk tanks will be tested for antibiotics prior to delivery to a processing plant. Tanks of milk found to contain antibiotics shall be disposed of at the expense of exhibitors. THERE SHALL BE NO TREATED MILK IN THE BULK TANK. Treated milk needs to be dumped.
3. Any exhibitor found putting milk in tank containing antibiotics will forfeit any premiums. The Michigan Dairy Expo may bar repeat or chronic violators from participating in future shows.

4. Net proceeds, if any, from the milk sold from the milking parlor will be used to offset the operating costs of Michigan Dairy Expo.

MILK IS SOLD .

Camping

There are lots available for camping at the Pavilion. Each campsite includes electricity hook-up, but no direct water hook-up. There are two water sources and dumpsite located nearby. Camping fees are \$20 per lot/day. If you intend to reserve a campsite, please confirm your reservation on the registration form.

Lodging and Meals

Hotels: The following are hotels in the area. Meals can be acquired at local restaurants (both fast food and sit-down styles are located nearby) as well as from MSU Concessions on-site. All lodging reservations should be made as soon as possible.

Comfort Inn, East Lansing 800-349-8701

Kellogg Center, MSU 800-875-5090

Fairfield Inn, Okemos 800-228-2800

Holiday Inn Express, Okemos 517-347-6690

Candlewood Suite, E. Lansing 517-351-8181

Michigan Dairy and Livestock Expos **Working together.**

The 9th annual Michigan Livestock Expo will be held July 12-16, 2017, the weekend immediately before Dairy Expo at the MSU Pavilion. Youth exhibitors of beef, sheep, swine, and goats have the opportunity to participate in this event. The Livestock Expo has the support of several important agricultural organizations including Michigan Farm Bureau, Michigan Milk Producers Association, Greenstone Farm Credit and Michigan State University. Several hundred animals participated in last year's Livestock Expo. More information on the Livestock Expo can be found at www.milivestock.com.

On Tuesday, July 18 a sale-abration and auction of champions will take place at the MSU Pavilion, beginning at 4:30 p.m. The VIP reception will include industry leaders and supporters of the sale. At 6:00 the auction sale will start. The dairy industry will be represented in the auction by 3 lots described below. The actual dairy animals will not actually be sold. A dairy product or gift, provided by Michigan Dairy Expo, will represent the animal and be presented to the buyer.

Each exhibitor will earn the maximum amount indicated below, with the remaining money used for scholarships, supporting Michigan 4-H Youth Dairy Days, and other dairy youth educational activities. By working together, Michigan Dairy and Livestock Expo are providing an opportunity for youth from across Michigan to further their education and passion for animal agriculture.

Dairy Sale-Abration Lots

Three Youth will be recognized

The 4-H Youth Dairy Days exhibitors that present the winning Supreme Grand Champion animal, The Supreme Junior Champion animal and the Supreme Grand Showperson will earn a slot in the Sale-Abration auction to be held on Tuesday. These individuals will be selling an appropriate dairy product in lieu of the actual animal. (This item will be supplied by Dairy Days.) The exhibitor will earn no more than \$1000 from the Sale-Abration, any monies generated over that amount will accumulate in a scholarship, premium and statewide dairy programming fund.

A 4-H Youth Dairy Days participant can only fill one of the three available dairy lots in the auction each year. If an individual is selected for more than one lot, the individual will select the lot they wish to sell, and the reserve of the other lot will sell.

2017 MICHIGAN DEPARTMENT OF AGRICULTURE
HEALTH REQUIREMENTS FOR LIVESTOCK EXHIBITED IN MICHIGAN

Health Standards (Revised January 2011 - replaces all previous editions) are set by the Michigan Department of Agriculture,
P.O. Box 30017, Lansing, MI 48909; Animal Industry Division: (517) 373-1077.
http://www.michigan.gov/mdard/0,1607,7-125-1571_7075---,00.html

The following is a summary of the health requirements for livestock exhibited in Michigan. The complete set of requirements can be obtained by downloading them from the Michigan Department of Agriculture website www.michigan.gov/mda-exhibitinfo or by contacting the fair/exposition staff or livestock entry office.

*Livestock means those species of animals used for human food and fiber or those species of animals used for service to humans. Livestock includes but is not limited to cattle, sheep, new world camelids (llamas, alpacas, vicunas, and guanacos), goats, bison, captive cervidae, ratites (cassowaries, kiwis, ostriches, and emus), swine, equine, poultry, aquaculture, and rabbits. Livestock does not include dogs and cats.

Livestock with clinical signs of infectious, contagious, or toxicological disease shall be removed from the fair, exhibitions, exposition or show or, by permission of the director, be isolated on the premises.

All Zones within Michigan
Animal Identification

All in-state cattle moving to a fair, exhibition, show authority, or sale are required to have an official Radio Frequency Identification (RFID) Device ear tag. All cattle must be identified with official RFID ear tags prior to movement from a premises. Official identification tags are premises-specific and may not be transferred to other premises or used on cattle not included in the herd on the premises to which the tags were issued.
Modified Accredited Zone (MAZ) – All cattle 15 days of age and older from the MAZ must also have an approved secondary identification tag. Exhibitors may contact the MDARD Atlanta area office at (989) 785-5616 or 1-888-565-8626 for information on these tags.

Modified Accredited Zone (MAZ)

This zone includes the entirety of Alcona, Alpena, Montmorency, and Oscoda Counties.

Movement Testing Requirements:

Movement of MAZ Cattle to a Fair in Another Zone within Michigan

Cattle 2 months of age and older must comply with one of the following prior to movement:

- a. Originate from a bovine tuberculosis accredited free herd, OR
- b. Originate from a herd that has received a negative whole herd bovine tuberculosis test within 12 months prior to movement, AND received a negative bovine tuberculosis test within 60 days prior to movement.

Cattle less than 2 months of age may be moved if they originate from a herd that has completed a whole herd test within 12 months prior to movement.

Cattle must have a post-movement test 60-120 days after the movement if they originate from a farm that is not Verified Wildlife Risk Mitigated, unless animal is slaughtered. This test will be at owners cost.

Movement Certificate Requirements

An official movement certificate must be obtained prior to movement of any cattle from any premises in the Modified Accredited Zone. Cattle being transported must be accompanied by a movement certificate(s) and the movement certificate(s) shall be produced upon the request of a law enforcement officer or the director.

Accredited Free Zone (TB Free Zone)

This zone includes the remainder of Michigan outside of Alcona, Alpena, Montmorency, and Oscoda counties.

Movement Testing Requirements

Movement of Cattle from Antrim, Charlevoix, Cheboygan, Emmet, Otsego, and Presque Isle Counties

Cattle Must comply with one of the following prior to movement:

- a. Originate from a herd which has been Wildlife Risk Mitigated verified, OR
- b. Complete a negative bovine tuberculosis test within 60 days prior to movement.

c. Cattle less than 2 months of age may be moved without a bovine tuberculosis test if they originate from a herd that completed a whole herd test within 12 months prior to movement.

Movement of Cattle from the remaining counties in the TB Free Zone

No bovine tuberculosis testing is required prior to movement.

Movement Certificate Requirements

An official movement certificate must be obtained prior to movement of any cattle if they originate from a herd located in Antrim, Charlevoix, Cheboygan, Emmet, Otsego, or Presque Isle counties that has NOT been Wildlife Risk Mitigated verified. Such cattle being transported must be accompanied by a movement certificate and the movement certificate shall be produced upon the request of a law enforcement officer or the director.

Cattle originating from a herd located in Antrim, Charlevoix, Cheboygan, Emmet, Otsego, or Presque Isle counties that have been Wildlife Risk Mitigated verified do not need a movement certificate.

Cattle originating from a herd located in the remaining counties in the TB Free Zone do not need a movement certificate.

Out-of-State Cattle

1. Cattle imported into Michigan for exhibition shall be accompanied by an official interstate health certificate or official certificate of veterinary inspection prepared by an accredited veterinarian from the state of origin.
2. Cattle imported into Michigan for exhibition shall have USDA approved official identification.

DAIRY OR BREEDING CATTLE

1. Female cattle over nineteen (19) months of age that are officially vaccinated against brucellosis and bulls and female cattle over six (6) months of age not officially vaccinated against brucellosis shall meet at least one of the following requirements:

- a. Test negative to an official brucellosis test within thirty (30) days before importation, OR
- b. Originate directly from a certified brucellosis-free herd, OR
- c. Originate directly from a state which has maintained, for the previous six (6) consecutive years prior to importation, a certified brucellosis class free status as defined in Title 9 of the Code of Federal Regulations and the Brucellosis Uniform Methods and Rules effective February 1, 1998, approved by the United States Department of Agriculture (USDA), Animal and Plant Health Inspection Service (APHIS), Veterinary Services (VS), and all amendments to those publications thereafter adopted pursuant to rules that the director may promulgate.

2. Cattle entering the state shall meet at least one of the following tuberculosis requirements and shall be recorded on the official interstate health certificate or certificate of veterinary inspection by the accredited veterinarian preparing the certificate.

- a. Originate directly from an accredited tuberculosis-free or modified accredited advanced state, OR
- b. Originate from an accredited tuberculosis-free or modified accredited advanced zone, OR
- c. Originate directly from an accredited tuberculosis-free herd, OR
- d. Sexually intact cattle over six (6) months of age, or goats and bison from states or regions classified as bovine tuberculosis modified accredited advanced may be imported if they are classified as negative to an official test for bovine tuberculosis with sixty (60) days prior to importation. Cattle less than eighteen (18) months of age, steers and spayed heifers, or cattle moving directly to slaughter, from states or regions classified as bovine tuberculosis modified accredited advanced do not require tuberculosis testing prior to entry.
- e. Originate from a herd that has had a negative whole herd test within the preceding twelve (12) months, AND have a negative tuberculosis test within sixty (60) days before importation.

Michigan Dairy Expo

Dairy Cattle Show General Rules and Regulations

Entries

1. All entries must be submitted on forms supplied in the Michigan Dairy Expo Livestock Premium Book. Copies of the entry form are allowed. Please print all information requested. Entries will not be accepted unless accompanied by the required entry fees. An entry fee is required to be eligible to show in the open and youth shows.

Make checks payable to "Michigan PDCA."

Entries must be mailed to: MICHIGAN DAIRY EXPO, 474 S. Shaw Lane Room 1287, East Lansing, MI 48824

2. Michigan Dairy Days 4-H Youth Show Entry Fee.

Entry Fee	JUNE 23 (Postmarked on or before June 23)	\$5.00 per animal
Late Entry Fee	JULY 7 (Postmarked June 24 through July 7)	\$10.00 per animal
	JULY 19 (July 8 through July 19)	\$25.00 per animal

a. All animals entered in 4-H Youth Dairy Days must be in place by Monday, July 18 at 5:00 p.m. Cattle will be released at the conclusion of their breed show. Please check in the show office to determine if stalls must be cleaned before leaving. Entries close at 5:00 p.m. on Monday July 18th. Animals and youth planning to participate in showmanship must be checked in on Monday evening to show in Dairy Days Show!

b. Animals need not be registered or owned by the exhibitor to be exhibited in this show.

3. Open Show Entry Fee.

Entry Fee	JUNE 23 (Postmarked on or before June 23)	\$25.00 per animal
Late Entry Fee	JULY 7 (Postmarked June 24 through July 7)	\$35.00 per animal
	JULY 19 (July 8 through July 19)	\$50.00 per animal
Dual Show (Holstein and Red & White Shows) Entry Fee ***		\$10.00 additional per animal

***Additional fee after initial entry for any R&W and Holsteins that want to show in both the Holstein and R&W open shows.

a. All animals must be in place by Wednesday, July 19 at 7:00 a.m. Cattle will be released at the conclusion of their breed show. Entries close at 4:00 p.m. on Wednesday, July 19.

4. FAXED entries will not be accepted as official entries. Entry Fees Must Accompany Entries.

5. Entries in both individual and group classes must be made on the enclosed printed form. You may request additional forms or make copies of the original entry blank. There is no entry fee for group classes.

6. Exhibits which have been mistakenly entered in a class may be transferred to proper classes before the judging at the discretion of the Superintendent. If such classes already have been judged, they will not be reopened.

7. The Superintendent of each department must check entries listed under each class in the entry book against each exhibit presented. At the time of judging, he must mark the entry book to show which animals or articles were passed on by the judge.

8. All competing animals will be exhibited in the ring at the discretion of the Superintendent. Any exhibitor failing to comply with any of the general rules applying to their department will forfeit premiums won.

9. The late entry fee for the open show is waived for any junior owned animals that are exhibited at the Michigan Dairy Days Youth Show and are not entered in the Open Breed Shows but who decide to enter. The junior exhibitor is still responsible for the \$25 entry fee to participate in the open show. These entries must be submitted by the close of open show entries at 4:00 p.m. on Wednesday, July 23.

10. All competing animals are subject to use in the Dairy Cattle Judging Contest held on Wednesday.

11. Exhibitors are solely responsible for their animals, including any damage or injury they cause.

12. Alcohol is not allowed in the MSU Pavilion at any time.

Other Information

1. Stall space will be assigned based on space. Extra space for tack, feed, etc. will be limited by the show coordinator.

2. A limited quantity of hay and straw will be available for purchase on site or you may bring your own. It may be purchased at posted times. You cannot bring hay and straw to sell.

3. Cattle may not be exhibited from a TB quarantined premise or area except upon permit from the Director of Agriculture or the Director's authorized agent.

4. All cattle must be identified by ear tag, tattoo or registration number and all animals must have an official RFID tag. Any animal without a tag must be removed from the premises.

5. All exhibits should be cleaned up by 9 a.m. and kept clean throughout the day. All manure must go into a manure pit located outside the building. All string, twine and paper must be disposed of in trash barrels or trash containers.

6. All sanitary and health regulations must be met.

7. Breeding cattle 30 months old or older must have calved or be safely with calf at the time of the show.

8. All Animals at the show are subject to use in the Dairy Cattle Judging Contest.

9. All exhibits and the area occupied by them must be kept in good order by the exhibitor as directed by the superintendent in charge. Each exhibitor is responsible for its own clean-up equipment (such as rakes, forks and shovels).

10. Smoking and alcohol consumption in the Pavilion will not be allowed under any circumstances.
11. The Dairy Expo Manager and its judges reserve the right to disqualify any animals which they feel have been tampered with illegally.
12. The MSU Pavilion offers a milk parlor for any interested youth to use. NO MILK TREATED WITH ANTIBIOTICS IN THE BULK TANK.

Dairy Days Educational Award Scale

4-H Youth Dairy Days Show - July 18, 2017

Dairy Days Award

	1st	2nd	3rd	4th	5th	6th	7th	8th	9th	10th
--	------------	------------	------------	------------	------------	------------	------------	------------	------------	-------------

Dairy Day classes that have 1-5 animal exhibited will use this scale

DD A:	\$20	\$18	\$15	\$10						
-------	------	------	------	------	--	--	--	--	--	--

Dairy Day classes that have 6-11 animals exhibited will use this scale

DD B:	\$20	\$18	\$15	\$10	\$5	\$5	\$5	\$5		
-------	------	------	------	------	-----	-----	-----	-----	--	--

Dairy Day showmanship classes

DD C:	\$20	\$18	\$15	\$10	\$10	\$10	\$5	\$5	\$5	\$5
-------	------	------	------	------	------	------	-----	-----	-----	-----

Michigan 4-H Youth Dairy Program and the Michigan PDCA has the right to adjust the award scale contingent on the number of cattle exhibited, sponsors, and show expenses.

Michigan Dairy Days 4-H Youth Show

7:30 a.m., Tuesday July 18 - Showmanship (4 Rings Simultaneously)

Following Showmanship, Ring 1 - Holstein Show

Ring 2 - Jersey Show, followed by other colored breeds

Order: of other color breeds determined by the number of entries (largest will follow Holstein/Jersey in first available ring.

Superintendent: Joe Domecq, Michigan Dairy Expo Manager • (517)353-7855

RULES AND REGULATIONS

The Michigan 4-H Youth Dairy Days Show is open to all Michigan youth ages 9 to 19 as of January 1, 2017. Each youth is invited to bring up to five animals to this event. All exhibitors must show the animals they enter unless special permission is given by the show superintendent. Each animal can be shown in only one of the following breeds: Ayrshire, Brown Swiss, Guernsey, Holstein, Jersey, Milking Shorthorn, and Red and White. Animals need not be registered to be exhibited in this show. Animals participating in the Red and White Dairy Cattle show must be red and white in color. Youth do not have to own the animals they show. A Dairy Days entry form (Form B) is required for each youth bringing animals. These forms must be submitted to the Michigan Dairy Expo office by the designated entry deadline and are printed in the back of this premium book. Dairy Days youth exhibitors are required to complete the Media/Medical release form and send it with your entries. The show will consist of showmanship classes and breed classes. Youth are allowed to show a total of five head with no more than one entered in a single class. An animal may be exhibited in only one breed division (i.e. Red & White cattle that are eligible for the Holstein show may only be entered in one breed).

- All exhibitors must show their own animals unless special permission is given by the show superintendent.
- There is no limit to the number of animals that may be brought from any one county.
- Youth entrants must be Michigan residents.
- Exhibitors are to fit, show and take care of their own exhibits except under special circumstances determined by the superintendent.
- The Supreme Grand Champion, Supreme Junior Champion and Supreme Grand Showperson are eligible to fill slots in the Sale-abration sale on Tuesday evening. A Dairy Days participant can only fill one of the dairy lots in the auction each year. If an individual is selected for more than one lot, the individual will select the lot they wish to sell, and the reserve of the other lot will sell.

Showmanship

In the showmanship classes, the person showing the animal is evaluated. Youth will be judged on his/her individual appearance and behavior, preparation of the animal for show, skill with which the animal is presented, and the youth's general knowledge of his/her animal. Youth will compete against other youth in the same age division regardless of breed of animal shown. Youth do not have to own the animals they show. However, youth must use an animal that is exhibited in one of the breed classes; an animal may only compete in showmanship one time. Judges will reserve the right to dismiss any exhibitor from the ring. Age divisions will be announced on show day.

All dairy days youth exhibitors of animals are automatically entered in showmanship. If you do not own an animal but are planning to exhibit in showmanship, please complete the Dairy Days Entry form and mark Showmanship. **ALL EXHIBITORS MUST CONFIRM THEIR ENTRY IN SHOWMANSHIP** at check in the evening before the show. Classes will be divided equally according to age and will be announced on show day. Youth showmanship participants do not need to own the animal they exhibit in showmanship. Participants do not need to be Dairy Days exhibitors.

Supreme Grand Showperson: All class winners are eligible to compete for the Supreme Grand Showperson of Dairy Days. The class will be held at the conclusion of all showmanship classes. The winner will be announced at the end of the show.

The Dairy Days exhibitor that earns supreme grand showmanship will earn a slot in the Sale-Abration auction to be held on Tuesday. The individual will be selling an appropriate dairy product in lieu of the actual animal. (This item will be supplied by Dairy Days.) The exhibitor will earn no more than \$1,000 from the Sale-Abration, any monies generated over that amount will accumulate in a scholarship, premium and statewide dairy programming fund.

Breed Classes

In the breed classes, the animal is evaluated. Animals will compete against other animals of the same breed and age group. Judging will be based on the animal's conformation traits and your presentation of the animal in the class. Ribbons and trophies will be awarded. **ONLY** one to one changes to entries will be allowed by each exhibitor and must be completed prior to Monday, July 17, 2017 at 5 p.m. **NO** changes will be accepted after this time. Entry fees may not be transferred to another exhibitor. Be sure to enter all eligible classes and list the **CORRECT** animal birth date.

**ALL ANIMALS MUST HAVE AN RFID TAG. ANY ANIMAL WITHOUT A RFID TAG
WILL BE EXCUSED FROM THE FACILITY.**

To Check-In Your Entries for the Youth Show on Monday, July 17

Bring to the show office one of the following items to identify each animal's birth date:

- Registration paper
- A Calf Sheet – generated by DHIA or a Cow management software program or
- A Copy of the entry Form B signed by an adult (parent or breeder).

All cattle entered for the 4-H Youth Dairy Days Show must be checked in on Monday. All youth must confirm their entry into showmanship. Failure to check in entries and confirm showmanship by 6:00 p.m. on Friday will disqualify youth from the Dairy Days Youth Show.

All cattle must have an RFID tag upon arrival. Any animal without a tag must be removed from the facility.

Entries Youth Show and Open Class - State Breed Shows

Youth with registered animals are welcome to stay until Friday and exhibit their animal(s) in the state breed shows. Animals must be registered in a recognized breed herd book. Animals that will be exhibited in both the youth show (Tues) and the open breed shows (Thurs - Fri), need to complete the Michigan Dairy Expo Exhibitor Form C and Animal Entry Form D and one Summary Form per your herd/county entered. All forms are printed in the back of this book. To enter cattle in the Dairy Days Show you must complete Entry Form B.

Cattle Release

Cattle that will only be shown in the Michigan 4-H Youth Dairy Days Show will be released any time after the completion of the show on Tuesday. Please indicate on the entry form if cattle will be leaving that evening. Bedding may need to be cleaned out from all animals that leave on Tuesday or Wednesday because open show exhibitors may be moving into those spots. Please check in the show office to determine if stalls must be cleaned out. If stalls are not cleaned by exhibitors (when required) leaving early, premiums may not be awarded. Even if youth take their animals home, youth are encouraged to stay and participate in the other exciting Dairy Days events.

- | | |
|---|--|
| 1. SPRING HEIFER CALF, Born March 1, 2017 - May 31, 2017 | 12. THREE-YEAR-OLD COW, Born September 1, 2013 - August 31, 2014 |
| 2. WINTER HEIFER CALF, Born December 1, 2016 - February 28, 2017 | 13. FOUR YEAR OLD COW, Born September 1, 2012 - August 31, 2013 |
| 3. FALL HEIFER CALF, Born September 1, 2016 - November 30, 2016 | 14. AGED COW, Born before September 1, 2012 |
| 4. SUMMER YEARLING HEIFER, Born June 1, 2016- August 31, 2016 | 15. DRY 3 & 4 YEAR OLD COW, Born September 1, 2012 - December 31, 2013 |
| 5. SPRING YEARLING HEIFER, Born March 1, 2016 - May 31, 2016 | 16. DRY AGED COW, Born before September 1, 2012 |
| 6. WINTER YEARLING HEIFER, Born December 1, 2015 - February 29, 2016 | 17. SENIOR AND RESERVE SENIOR CHAMPION FEMALE, Classes 9-15, first and second place animals will be considered |
| 7. FALL YEARLING HEIFER, Born September 1, 2015 - November 30, 2016 | 18. GRAND AND RESERVE GRAND CHAMPION FEMALE, Selection to be made from Junior and Senior Champions |
| 8. JUNIOR & RESERVE JUNIOR CHAMPION - Classes 1-7, first and second place animals will be considered. | 19. THREE BEST FEMALES, Three females owned by one exhibitor |
| 9. FALL YEARLING in Milk, Born September 1, 2015 - November 30, 2016 | 20. DAM AND DAUGHTER, Cow with one of her daughters |
| 10. JUNIOR TWO-YEAR-OLD COW, Born March 1, 2015- August 31, 2016 | 21. PRODUCE OF DAM, Two daughters from the same dam |
| 11. SENIOR TWO-YEAR-OLD COW, Born September 1, 2014 - February 28, 2015 | 30. COUNTY DAIRY HERD: Four with not more than one animal owned by any individual (may be more than one breed but county may enter only one county herd in the show to represent the entire county exhibit). Enter this class on show day. |

SUPREME Junior Champion The Junior Champion of each breed show is eligible to compete for Supreme Junior Champion honors of Dairy Days. The animal must be present during the judging of Supreme Champion to compete and the class will be held following the conclusion of all breed shows on Tuesday. Winner is eligible for the Sale-Abraction.

Supreme Grand Champion The Grand Champion of each breed show is eligible to compete for Supreme Champion honors of Dairy Days. The animal must be present during the judging of Supreme Champion to compete and the class will be held following the conclusion of all breed shows on Tuesday.

The Dairy Days exhibitor that exhibits the winning Supreme Junior Champion and Supreme Grand Champion individual will earn a slot in the Sale-Abraction auction to be held on Tuesday. The individual will be selling a appropriate dairy product in lieu of the actual animal. (This item will be supplied by Dairy Days.) The exhibitor will earn no more than \$1000 from the Sale-Abraction, any monies generated over that amount will accumulate in a scholarship and statewide dairy programing fund.



2017 All-Michigan Dairy Breed Shows Dairy Cattle Open Show Exhibition Rules and Regulations

The showing of registered dairy cattle stimulates and sustains interest in breeding registered dairy cattle. It is also an important part of the promotion, merchandising and breeding program of many breeders. For these reasons, the Purebred Dairy Cattle Association (PDCA) believes that it is in the best interest of all breeders of registered dairy cattle to maintain a reputation of integrity in dairy cattle shows and to present a wholesome and progressive image of dairy cattle in the show ring. - PDCA (April 3, 2004)

1. Applications: Entries in the breed open shows must be submitted on open show entry forms furnished by the Michigan Dairy Expo, giving the name, registration number and date of birth of the animal to be exhibited.
2. Eligibility: All entries must be animals recorded in the American or foreign herd books for the specific breed to which they belong. All animals must have registration papers in the owner's name or a transfer (to be collected by Superintendent and forwarded to the appropriate association) to be eligible to show. No animal will be checked in without this identification and original registration papers.
3. Exhibitors must be in good standing with the State and National Breed Association in which they are members.
4. Entry Check -In: Each exhibitor will be required to present an official certificate of registration for his/her entries. All entries will need to be checked in by 4:00 p.m. on Wednesday, July 19. Classroom D will be open for check-in from 11:00 a.m. to 4:00 p.m. All animals must be checked in during this time.
5. Entries: All entries must be made in name shown on registration certificate. Each exhibitor should be entered on separate entry form. Note: If a herd is registered in the names of the immediate members of a family residing on the same farm, these persons may combine their entries as a "Herd Unit" and be considered as one exhibitor. In order to qualify as a "Herd Unit" all animals must be kept in the same herd. An animal owned by any person in the "Herd Unit" may be substituted for one owned by any other person in the "Herd Unit". Animals bred by any members of the "Herd Unit" will be considered as having been bred by the "Herd Unit".
6. Ownership: Animals owned in partnership or by syndicate may be shown in the name of the partnership or syndicate only; except that at the time of entry a determination will be made that animals will be shown in the name of one partner or syndicate member. Animals must be shown the same way in group classes as they are in open single classes.
7. Arrival Time: Animals entered for exhibition must be in place no later than 7:00 a.m. Wednesday, July 19. Dairy cattle are released at the conclusion of their respective breed show. No arrival on Tuesday between 2 and 9 p.m.
8. Exhibitors : All show people are encouraged to display a standard exhibitors card harness with class number clearly visible. Exhibitors are encouraged to wear white pants/jeans or skirt. Exhibitors must be at least 9 years of age (1/1/17) to exhibit animals in the Open shows.
9. Premier Breeder Award : The Premier Breeder award is presented to the breeder with a minimum of three (3) and no more than six (6) animals, all shown in the single classes, which total the most points. No entry is required and the winner need not be an exhibitor at the show nor the owner of the point-winning animals.
Breeder Defined: The owner of the dam at the time of service shall be considered the breeder. Where animals are registered in the names of different members of a family residing on one farm and where the herd is one unit, all animals shall be considered bred by that unit.
10. PREMIER EXHIBITOR AWARD : The Premier Exhibitor award is presented to the exhibitor with a minimum of three (3) and no more than six (6) animals all shown in the single classes, which total the most points. EXHIBITOR DEFINED: The exhibitor must be the owner or member of a partnership owning the animal. Where animals are registered in the names of different members of a family residing on one farm and where the herd is one unit, all animals may be considered exhibited by that unit.

**ALL ANIMALS MUST HAVE AN RFID TAG. ANY ANIMAL WITHOUT A RFID TAG
WILL BE EXCUSED FROM THE FACILITY.**

11. POINT SYSTEM: The point system for determining Premier Breeder and Premier Exhibitor awards shall be as follows:

Premier Exhibitor and Premier Breeder Point System

Junior Females, Dry Cows 10 9 8 7 6 5 4 3 2 1 (1st - 10th place)

Senior Females 20 18 16 14 12 10 8 6 4 2 (1st - 10th place)

12. SUBSTITUTIONS : Substitutions are allowed in the same class with the same owner or "Herd Unit". In addition, one open substitution (out of class) will be allowed per "Herd Unit".

13. PHOTOGRAPHER : A professional photographer will be available to take pictures Friday. Exhibitors are responsible for their photography costs.

14. JUDGING CONTEST: All animals that will be competing in any of the breed shows are subject to use in the Dairy Cattle Judging Contest held on Wednesday. At the request of the superintendent in charge, exhibitors may be required to furnish cattle for the judging contest.

Supreme Champion Michigan Dairy Expo

Sponsored by: Michigan Dairy Expo and the Michigan PDCA

RULES AND REGULATIONS

1. ELIGIBILITY: The animal must be present during the judging of Supreme Champion to compete.

2. Selection : A panel of judges will determine Supreme Champion.

3. SUPREME GRAND CHAMPION: to be held at the conclusion of the breed shows on Friday.

SUPREME GRAND CHAMPION: The Grand Champion of each breed show is eligible to compete for Supreme Grand Champion honors of Michigan Dairy Expo.

4. SUPREME JUNIOR CHAMPION: to be held at the conclusion of the breed shows on Friday.

SUPREME JUNIOR CHAMPION: The Junior Champion of each breed show is eligible to compete for Supreme Junior Champion honors of Michigan Dairy Expo.

All Michigan Dairy Junior Breed Shows - Michigan Dairy Expo

Sponsored by Michigan PDCA, representing Michigan's purebred dairy associations and industry

MI DAIRY EXPO JUNIOR SHOW eligibility - ALL Junior Breed Shows:

1. JUNIOR MEMBER eligibility: Exhibitors must be a minimum of nine years old, but not have reached their 21st birthday as of 1/1/17. Members who become 21 years of age during the current year will be allowed to compete in Junior activities until December 31st of the current year but not beyond that time.

2. OWNERSHIP: Junior members must have project animals registered in their name by June 1 and they must show their animal, or have another junior member show their animal, to compete in the junior division and to qualify for the junior ribbons in the class. (Animals owned by junior members less than 9 years of age may be shown by an older Junior and the points will be awarded to the owner of the animal) All animals exhibited in showmanship must be owned by the junior showperson. Ownership of animals or a breed sanctioned lease, must be made and recorded prior to June first of the year shown.

3. ATTIRE : To receive recognition as a junior exhibitor during the All-Michigan Dairy Show, the leads person of any junior owned and shown entry must wear shirts provided by the Michigan Dairy Expo.

Showmanship - Michigan Dairy Expo

Friday, July 21 8:30 a.m.

Showmanship classes will be held on Friday. The Michigan Junior Holstein and the Michigan Junior Jersey Associations will sponsor showmanship for all Junior Holstein and Junior Jersey exhibitors. A third "All Other Breed " showmanship will be held for any interested youth who is not eligible for Holstein or Jersey showmanship. Premiums for these Showmanship classes will not be paid by Michigan Dairy Expo/PDCA. All prizes for these showmanship classes will be provided by the breed associations.

The Michigan Junior Holstein Association has voted "Junior members do NOT need to own the animal they will be using for showmanship. However, an animal may be used only once during the Michigan Dairy Expo showmanship, and may not be shared by Junior exhibitors in different showmanship age divisions."

Every Junior Jersey members will be provided a \$5 premium upon completion of showmanship, provided by MJCC.

Classes will be offered in three age divisions (age determined as of 1/1/17)

Junior	9-12 years
Intermediate	13-15 years
Senior	16-20 years

Pee-Wee Showmanship - Michigan Dairy Expo

Sponsored by: Michigan Dairy Expo and the Michigan PDCA

Friday, July 21, Approximately 12:00 p.m.

1. **PARTICIPATION:** Any youth under the age of 9 is welcome to participate in Pee-Wee showmanship. Animals need not be owned or exhibited by youth participant. No entry is required. Participants need only to be present to show.
 2. **ELIGIBILITY:** Exhibitors that participated or competed in the All-Breeds Division 1 Showmanship class are ineligible to compete. Pee-Wee showmanship exhibitors are not eligible to compete in the breed open show showmanship classes.
 3. **ACTION:** Two rounds of Pee-Wee showmanship will be held. Individuals are asked to only show in one of the rounds. Animals, however, can be used in both rounds of Pee-Wee showmanship.
 4. **GOAL:** The objective of Pee-Wee showmanship is to introduce the concept of showing to younger children, to help encourage their interest in showing dairy cattle. This is a non-competitive, positive environment. Safety is of the utmost importance, older youth or adults are encouraged to go into show arena to ensure safety of their exhibitor.
-

Michigan Ayrshire State Show

Charles Sayles (517-290-6627) - Gene Sickels (517-857-2309)

Michigan Brown Swiss State Show

Michigan Brown Swiss Association, Susan Heisler, (517-857-3856) Superintendent

ADDITIONAL RULES AND REGULATIONS - (not covered in general All MI Show Rules)

1. **ELIGIBILITY:** All animals exhibited at Brown Swiss shows must be accompanied by the registration certificate; no photostatic copies will be accepted. All animals must be registered by the Brown Swiss Association of America or the Brown Swiss Association of Canada. Ownership shall be established by the name on the certificate of registry. Each animal must be at least 75% Registered. STEP II IE Identity animals which have a 3793 + six (6) digit registration number may also be shown. (Registration papers are green with black borders).
2. The State Association provides a \$50.00 rebate to a Junior who has a professional picture taken of his/her animal. A copy of the photo must be sent to the secretary so that these animals can be entered for state and national awards. A photo and a copy of the paid statement must be submitted to the State Secretary for the rebate. Any animal placing first at any of the 2016 qualifying shows is eligible for the rebate.

Michigan Guernsey State Show

Michigan Guernsey Association, Ken Vogt, Superintendent (517-629-6250)

Milking Shorthorn State Show

Joe Domecq, Superintendent

Class Breakdowns: The following class breakdowns will be used for the Ayrshire, Brown Swiss, Guernsey and Milking Shorthorns

- | | |
|---|--|
| 1. SPRING HEIFER CALF Born March 1, 2017 - May 31, 2017 | 9. JUNIOR AND RESERVE JUNIOR CHAMPION - OPEN SHOW |
| 2. WINTER HEIFER CALF Born December 1, 2016- February 28, 2017 | Classes 1-7, first and second place animals will be considered |
| 3. FALL HEIFER CALF Born September 1, 2016 - November 30, 2016 | 10. JUNIOR BEST THREE FEMALES 3 animals from the heifer classes, all owned by one exhibitor. |
| 4. SUMMER YEARLING HEIFER Born June 1, 2016 - August 31, 2016 | 11. DRY COW (Must have had at least one calf.) |
| 5. SPRING YEARLING HEIFER Born March 1, 2016 - May 31, 2016 | 12. FALL YEARLING in Milk Born September 1, 2015 - November 30, 2015 |
| 6. WINTER YEARLING HEIFER Born December 1, 2015 - February 29, 2016 | 13. JUNIOR TWO-YEAR -OLD COW Born March 1, 2015 - August 31, 2015 |
| 7. FALL YEARLING HEIFER Born September 1, 2016 - November 30, 2016 | 14. SENIOR TWO-YEAR -OLD COW Born September 1, 2014 - February 28, 2015 |
| 8. JUNIOR & RESERVE JUNIOR CHAMPION - JUNIOR SHOW | 15. THREE -YEAR -OLD COW Born September 1, 2013 - August 31, 2014 |
| Classes 1-7, first and second place animals will be considered | 16. FOUR YEAR OLD COW Born September 1, 2012- August 31, 2013 |

17. FIVE YEAR COW AND OLDER Born before September 1, 2012
 18. SENIOR AND RESERVE SENIOR CHAMPION FEMALE - JUNIOR SHOW: Classes 11-16, first and second place animals are considered
 19. GRAND AND RESERVE GRAND CHAMPION FEMALE - JUNIOR SHOW: Selection to be made from Junior and Senior Champions.
 20. SENIOR AND RESERVE SENIOR CHAMPION - OPEN SHOW: Classes 11-16, first and second place animals will be considered
 21. GRAND AND RESERVE GRAND CHAMPION FEMALE - OPEN SHOW: Selection to be made from Junior and Senior Champions

22. BEST UDDERED OF SHOW: Selected from the best uddered animals in the individual milking classes
 23. BEST THREE FEMALES All 3 females must be bred & owned by exhibitor
 24. DAM & DAUGHTER Any cow and one of her female offspring, any age
 25. PRODUCE OF DAM Two female offspring of one dam
 26. PREMIER EXHIBITOR AWARD The exhibitor winning the most points on six or less animals
 27. PREMIER BREEDER AWARD The breeder winning the most points on six or less animals

2017 All-Michigan Holstein Show

Michigan Holstein Association

Suzanne Tuttila, Executive Secretary 517-490-7736,

Show Committee Chair - Nicole Vanderploeg 940-733-8960, Melissa Hart 517-398-1957

1. ELIGIBILITY: All animals exhibited at Holstein shows must be accompanied by the registration certificate; no photostatic copies will be accepted. All animals must be registered by the Holstein Association of America or the Holstein Association of Canada. Ownership shall be established by the name on the certificate of registry or the presentation of the certificate of registry along with a signed and completed transfer and fee, which will be forwarded to the Holstein Association. Each exhibitor must be a current member in good standing of the Michigan Holstein Association or Michigan Junior Holstein Association. Each animal must be at least 87%-RHA.
2. SHOW AUTHORITY: The Show Committee, Michigan Holstein Association and its agents reserve the final and absolute right to interpret the rules and regulations of the show and will settle all matters in connection with the show. *The Michigan Holstein Association Show Committee reserves the right to inspect any animal.
3. ALL -MICHIGAN & RESERVE ALL-MICHIGAN : The first place animal in each class will be designated All-Michigan. The second place animal in each class will be designated Reserve All-Michigan. JUNIOR ALL-MICHIGAN & RESERVE JUNIOR ALL -MICHIGAN : The first place animal of the junior show in each class will be designated Junior All-Michigan. The second place junior animal in each class will be designated Reserve Junior All-Michigan.
4. FIRST BRED AND OWNED : First place bred and owned animals will be recognized for the highest placing animal bred and owned by the exhibitor as determined by registration certificate. Breeder is to be determined as the owner of the dam at the time of service; where a herd is registered in the names of different members of a family residing on one farm, where the herd is one unit and everyone is using the same prefix, all entries may be considered as Bred and Owned by Exhibitor.
5. PRODUCTION AWARDS : Production awards will be presented in classes 11, 15, 16, 17, 20, 21, & 22 with a high lifetime award in class 23. Records will be ranked using the ACTUAL MILK PRODUCTION without regard to 2X or 3X milking, on the current completed DHI, 305D actual record. Records MUST be on entry to be eligible. Records will be verified by DHI test sheets or lifetime sheets.
6. DHI RECORDS : It shall be the responsibility of each exhibitor to make available all registration, health or DHI sheets.
7. DRY COWS: Entries in dry cow classes must have produced a live calf within 18 months or prove to be with calf. A cow shown dry must have been reported dry on DHI records or any cow that was last fresh 280 days or more, prior to the date of the show, may be shown at the option of the exhibitor in either the dry or milking cow class. The DHI sheet must accompany animals to be shown in the dry cow classes.
8. HOLSTEIN and RED & WHITE DAIRY CATTLE : Exhibitors that choose to show eligible entries in both the Holstein show and the Red & White Dairy Cattle show need to pay the regular entry fee plus a reduced entry fee of \$10 for the second breed show entry.
9. DEBTS: Any person and/or immediate family member of a person who owes the Michigan Holstein Association or from Michigan-Indiana Holstein News more than \$100 and is over 90 days delinquent will not be able to show in any state-sponsored show including the All-Michigan Holstein Show. The debt must be paid by close of entries. If the payment is made the week of the Michigan Dairy Expo, the payment must be in the form of cash, certified check or money order.

Exhibitors are allowed one substitution within a class and one substitution in any class without incurring any fees. Any substitutions beyond that will be charged an additional entry fee.

Heifer and Dry Cow classes will be held on Friday morning. Great Lakes Futurity class will be held on Thursday evening. All milking cow classes will be held on Friday afternoon.

MI Holstein Show Class Listing

- H1. SPRING HEIFER CALF Born March 1, 2017 - May 31, 2017
H2. WINTER HEIFER CALF Born December 1, 2016 - February 28, 2017
H3. FALL HEIFER CALF Born September 1, 2016 - November 30, 2016
H4. SUMMER YEARLING HEIFER Born June 1, 2016 - August 31, 2016
H5. SPRING YEARLING HEIFER Born March 1, 2016 - May 31, 2016
H6. WINTER YEARLING HEIFER Born December 1, 2015 - February 29, 2016
H7. FALL YEARLING HEIFER Born September 1, 2015 - November 30, 2015
H8. JUNIOR & RESERVE JUNIOR CHAMPION - JUNIOR SHOW: Classes H1-H7, first and second place animals will be considered.
H9. JUNIOR AND RESERVE JUNIOR CHAMPION - OPEN SHOW: Classes H1-H7, first and second place animals will be considered.
H10. JUNIOR BEST THREE FEMALES 3 animals from the heifer classes, all owned by one exhibitor
H11. DRY COW
H13. FALL YEARLING in Milk Born September 1, 2015 - November 30, 2015
H14. GREAT LAKES STATE FUTURITY #31. Must be eligible as a Futurity #31 entry. (Cows entered in this class will NOT be shown in Junior and Senior Three-Year-Old Cow Classes)
H15. JUNIOR TWO-YEAR -OLD COW Born March 1, 2015 - August 31, 2015
H16. SENIOR TWO-YEAR -OLD COW Born September 1, 2015 - February 28, 2015
H17. JUNIOR THREE -YEAR -OLD COW Born March 1, 2014 - August 31, 2014
H18. SENIOR THREE -YEAR -OLD COW Born September 1, 2013 - February 28, 2014
H19. INTERMEDIATE CHAMPION AND RESERVE INTERMEDIATE CHAMPION JUNIOR SHOW: Classes H13-H18, first and second place animals will be considered
H20. INTERMEDIATE CHAMPION AND RESERVE INTERMEDIATE CHAMPION OPEN SHOW: Classes H13-H18, first and second place animals will be considered.
H21. FOUR YEAR OLD COW Born September 1, 2012 - August 31, 2013
H22. FIVE YEAR OLD COW Born September 1, 2011 - August 31, 2012
H23. AGED COW: Born before September 1, 2011
H24. 125,000 POUND COW: Any cow, any age, with official lifetime credits over 125,000 pounds of milk as of show day as confirmed by DHI records or performance pedigree.
H25. SENIOR AND RESERVE SENIOR CHAMPION - JUNIOR SHOW: Classes H11-12 and H20-24, first and second place animals will be considered
H26. GRAND AND RESERVE GRAND CHAMPION FEMALE - JUNIOR SHOW: Selection to be made from Junior, Intermediate and Senior Champions.
H27. SENIOR AND RESERVE SENIOR CHAMPION - OPEN SHOW: Classes H11-12 and H20-24, first and second place animals will be considered
H28. GRAND AND RESERVE GRAND CHAMPION FEMALE - OPEN SHOW: Selection to be made from Junior, Intermediate and Senior Champions.
H29. BEST UDDERED OF SHOW: Selected from the best uddered animals in the individual milking classes.
H30. CHAMPION AND RESERVE CHAMPION BRED BY EXHIBITOR: Classes H1-8 and H11-24, first place animals will be considered.
H31. DAIRY HERD Four milking or dry cows all owned by exhibitor
H32. THREE BEST FEMALES: All three must be bred and at least one owned by exhibitor.
H33. PRODUCE OF DAM: Two offspring, any age, from the same dam, may be owned by more than one exhibitor.
H34. DAM & DAUGHTER : Any cow and one of her offspring, any age, may be owned by more than one exhibitor.
H35. JUNIOR PREMIER EXHIBITOR AWARD: The junior exhibitor winning the most points on six or less animals..
H36. JUNIOR PREMIER BREEDER AWARD: The junior breeder winning the most points on six or less animals.
H37. OPEN PREMIER EXHIBITOR AWARD: The open exhibitor winning the most points on six or less animals.
H38. OPEN PREMIER BREEDER AWARD: The junior breeder winning the most points on six or less animals.
-

Michigan Jersey State Show

Michigan Jersey Cattle Club,
Carrie Delong, Show Secretary

Deanne Buell (deanne.buell@gmail.com) and Tim Place - Jersey Show Committee Chairperson

ADDITIONAL RULES AND REGULATIONS

1. PRODUCTION AWARDS : Production awards will be presented in classes 14, 16, 17, 18, 21, 22 and 23. The most recent 305 day actual record will be used to determine the highest \$ value for milk. Records will be ranked using the ACTUAL MILK PRODUCTION without regard to 2X or 3X milking, on the current completed DHIA, 305 day actual record. Records MUST be on entry to be eligible. Records will be verified by DHIA test sheets or lifetime sheets. A ribbon will be awarded. **YOU MUST BRING YOUR DHIA sheets or individual life time cow sheets to the show for verification of production to qualify for the award.**
2. JERSEY PREMIUMS: The Michigan Jersey Cattle Club will give \$25.00 to new Jersey exhibitors at Michigan Dairy Expo. They must be members of MJCC.

CHAMPION JERSEY PREMIUMS: The Grand Champion Jersey will receive \$150.00 The Michigan Jersey Juniors are sponsoring \$50.00 to the Senior and Junior Champion of the Junior Show, and \$25.00 the Reserve Senior and Junior Champion as well as the Intermediate Champion and Reserve Intermediate Champion.

3. **DEBTS:** Any person and/or immediate family member of a person who owes the Michigan Jersey Cattle Club or the Michigan Jersey News more than \$50 and is over 90 days delinquent will not be able to show in any state sponsored show including the Michigan Jersey Show. The debt must be paid by close of entries. If the payment is made the week of the Michigan Dairy Expo, the payment must be in the form of cash, certified check or money order.

4. **ALL BULLS** must have a nose ring and be double tied with a neck tie.

5. **ELIGIBILITY:** Animals are eligible when recorded by the American Jersey Cattle Association in the Herd Register or with Generation Count 4 or greater, or by Jersey Canada with registry status of 93.75% and greater.

6. Heifer, bulls and dry cow classes will be held on Friday morning. All milking cow classes will be held on Friday afternoon.

Michigan Jersey State Show classes

J1. **BULL CALF:** Born September 1, 2016 - May 31, 2017.

J2. **YEARLING BULL :** Born September 1, 2015 - August 31, 2016

J3. **CHAMPION BULL:** Trophy Sponsors: Champion,

J4 **SPRING HEIFER CALF** Born March 1, 2017 - May 31, 2017.

J5. **WINTER HEIFER CALF** Born December 1, 2016 - February 28, 2017

J6. **FALL HEIFER CALF** Born September 1, 2016 - November 30, 2017

J7. **SUMMER YEARLING HEIFER** Born June 1, 2016 - August 31, 2016

J8. **SPRING YEARLING HEIFER** Born March 1, 2016 - May 31, 2016

J9. **WINTER YEARLING HEIFER** Born December 1, 2015 - February 29, 2016

J10. **FALL YEARLING HEIFER** Born September 1, 2015 - November 30, 2016

J11. **JUNIOR & RESERVE JUNIOR CHAMPION - JUNIOR SHOW:** Classes J4-J10, first and second place animals will be considered.

J12. **JUNIOR AND RESERVE JUNIOR CHAMPION - OPEN SHOW:** Classes J4-J10, first and second place animals will be considered.

J13. **JUNIOR BEST THREE FEMALES** 3 animals from the heifer classes, all owned by one exhibitor.

J14. **DRY COW** (Must have had at least one calf.).

J15. **FALL YEARLING in MILK** Born September 1, 2015 - November 30, 2016

J16. **YEARLING in MILK:** Born September 1, 2015 - November 30, 2015. (Must have freshened.)

J17. **JUNIOR TWO-YEAR -OLD COW** Born March 1, 2015 - August 31, 2015.

J18. **SENIOR TWO-YEAR -OLD COW** Born September 1, 2014 - February 28, 2015.

J19. **JERSEY FUTURITY** (Futurity premiums)

J20. **JUNIOR THREE -YEAR -OLD COW** Born March 1, 2014 - August 31, 2014.

J21. **SENIOR THREE -YEAR -OLD COW** Born September 1, 2013 - February 28, 2014.

J22. **INTERMEDIATE CHAMPION AND RESERVE INTERMEDIATE CHAMPION - JUNIOR SHOW:** Classes J15-J20, first and second place animals will be considered.

J23. **INTERMEDIATE CHAMPION AND RESERVE INTERMEDIATE CHAMPION - OPEN SHOW:** Classes J15-J21, first and second place animals will be considered.

J24. **FOUR YEAR OLD COW** Born September 1, 2012 - August 31, 2011.

J25. **FIVE YEAR OLD COW** Born September 1, 2011 - August 31, 2012.

J26. **AGED COW** Born before September 1, 2011.

J27. **SENIOR AND RESERVE SENIOR CHAMPION – JUNIOR SHOW:** Classes J23-J25, first and second place animals will be considered.

J28. **SENIOR AND RESERVE SENIOR CHAMPION – OPEN SHOW:** Classes J24-J26, first and second place animals will be considered.

J29. **GRAND AND RESERVE GRAND CHAMPION FEMALE - JUNIOR SHOW:** Selection to be made from Junior, Intermediate and Senior Champions.

J30. **GRAND AND RESERVE GRAND CHAMPION FEMALE - OPEN SHOW:** Selection to be made from Junior, Intermediate and Senior Champions.

J31. **BEST UDDERED OF SHOW:** Selected from the best uddered animals in the individual milking classes.

J32. **HIGHEST PRODUCTION BASED ON DOLLAR VALUE** Any cow, any age, with most current milk record as confirmed by DHIA records or performance pedigree.

J33. **DAM & DAUGHTER** Cow with one of her daughters.

J34. **PRODUCE OF DAM** Two from the same dam, no more than one bull.

J35. **SENIOR THREE BEST FEMALES** Three Senior females bred by one exhibitor.

J36. **DAIRY HERD** Four milking or dry cows all owned by exhibitor.

J38. **PREMIER EXHIBITOR AWARD** The exhibitor winning the most points on six or less animals. Banner provided by:

J39. **PREMIER BREEDER AWARD** The breeder winning the most points on six or less animals.

Michigan Red & White Dairy Cattle State Show

MRWDCA / Lynn Powell, Superintendent (517) 655-1230

Christina Lehman (989) 661-2714 or (517) 818-7091

1. REGISTRATION : The MRWDCA will accept registration papers and/or a certificate of identification (CID) from Holstein Association USA. Other registration papers accepted will be from RWCDCA, Holstein Association USA showing the suffix "RED" and Holstein Canada showing the suffix "RED".

2. ELIGIBILITY: Only true Red and Whites are eligible to show. No Black-Reds, Brindles or Roans will be allowed to show. Red Carriers that are Black & White with RWDCDA papers are not eligible to show.

3. RED & WHITE DAIRY CATTLE and HOLSTEINS : Exhibitors that choose to show eligible entries in both the Holstein show and the Red & White Dairy Cattle show need to pay the regular entry fee plus a reduced entry fee of \$10 for the second breed show entry. For example: the entry fee for an entry received before June 21 would be a total of \$35 to exhibit in both the All-Michigan Holstein show and the Michigan Red & White Dairy Cattle.

Michigan Red & White Dairy Cattle Classes

R1. SPRING HEIFER CALF Born March 1, 2017 - May 31, 2017

R2. WINTER HEIFER CALF Born December 1, 2016 - February 28, 2017

R3. FALL HEIFER CALF Born September 1, 2016 - November 30, 2016

R4. SUMMER YEARLING HEIFER Born June 1, 2016 - August 31, 2016

R5. SPRING YEARLING HEIFER Born March 1, 2016 - May 31, 2016

R6. WINTER YEARLING HEIFER Born December 1, 2015 - February 29, 2016

R7. FALL YEARLING HEIFER Born September 1, 2015 - November 30, 2015

R8. JUNIOR & RESERVE JUNIOR CHAMPION - JUNIOR SHOW: Classes 1-7, first and second place animals will be considered.

R9. JUNIOR AND RESERVE JUNIOR CHAMPION - OPEN SHOW: Classes 1-7, first and second place animals will be considered.

R10. JUNIOR BEST THREE FEMALES: 3 animals from the heifer classes, all owned by one exhibitor.

R11. DRY 3 & 4 YEAR OLD COW Born September 1, 2012 - December 31, 2014.

R12. DRY AGED COW Born before September 1, 2012

R13. YEARLING IN MILK: Born September 1, 2013 - November 30, 2015. (Must have freshened.).

R14. JUNIOR TWO-YEAR -OLD COW Born March 1, 2015 - August 31, 2015.

R15. SENIOR TWO-YEAR -OLD COW Born September 1, 2014 - February 28, 2015.

R16. JUNIOR THREE -YEAR -OLD COW Born March 1, 2014 - August 31, 2014.

R17. SENIOR THREE -YEAR -OLD COW Born September 1, 2013 - February 28, 2014.

R18. FOUR YEAR OLD COW Born September 1, 2012 - August 31, 2013.

R19. FIVE YEAR COW Born September 1, 2011 - August 31, 2012.

R20. AGED COW Born before September 1, 2011.

R21. SENIOR AND RESERVE SENIOR CHAMPION FEMALE - JUNIOR SHOW: Classes R11-R19, first/second place animals will be considered

R22. GRAND AND RESERVE GRAND CHAMPION FEMALE - JUNIOR SHOW: Selection to be made from Junior and Senior Champions.

R23. SENIOR AND RESERVE SENIOR CHAMPION - OPEN SHOW: Classes R11-R19, first and second place animals will be considered.

R24. GRAND AND RESERVE GRAND CHAMPION FEMALE - OPEN SHOW: Selection to be made from Junior and Senior Champions.

R25. DAM & DAUGHTER Cow with one of her daughters.

R26. PRODUCE OF DAM Two daughters from the same dam.

R27. SENIOR BEST THREE FEMALES Three females owned by one exhibitor

R28. PREMIER EXHIBITOR AWARD The exhibitor winning the most points on six or less animals.

R29. PREMIER BREEDER AWARD The breeder winning the most points on six or less animals.

PDCA Fitting and Showing Score Card

Appendix A

A. Appearance of Animal (30 points)

1. Cleanliness — 10 points

- a. The best fitted animals are always extremely clean. Hair and switch must be completely clean and free from stains.
- b. Hide and ears free of dirt and wax. Legs and feet clean.
- c. Must be washed early enough to be completely dry at show time.

2. Grooming — 10 points

- a. Hair properly groomed and the hide soft and pliable. Hair dresser and powders should not be used in excess. Excessive manipulation of hair is undesirable; however, topline may be blow dried and hair spray used to straighten topline.
- b. Hooves trimmed and shaped to enable animal to walk and stand naturally.
- c. All animals of all breeds older than 6 months must be dehorned.

3. Clipping — 5 points

- a. Final clipping should be done just before the show. Clipped and unclipped areas should be smoothly blended so clipper lines do not show.
- b. Head, neck, ears, tail, udder (for cows), and elsewhere clipped as needed. Front and rear legs should be clipped to give the appearance of greater flatness of bone and to remove stains. Toplines should be trimmed to improve straightness. Withers are clipped to a sharp point to improve angularity. Body clipping is acceptable, but additional credit should not be given for professional clipping. Belly and udder not to be clipped on heifers that have not freshened and are not springing close.

4. Condition and thriftiness, showing normal growth, being neither too fat nor too thin — 5 points

B. Appearance of Exhibitor (10 points)

- a. Clothes and person neat and clean; white costume preferred. Durable, protective shoes are recommended when large animals are exhibited. Clothing should be practical and tasteful.
- b. Local regulations may include special instructions for exhibitors, e.g., banning farm names on shirts, requiring neckties or organization clothing (FFA jackets, 4-H shirts or ties, breed vests, etc.). It is the responsibility of show management to inform judges and exhibitors of special rules.

C. Showing Animal In the Ring (60 points)

1. Leading — 25 points

- a. Enter leading the animal at normal walk around the ring in a clockwise direction, walking opposite the head on the left side, holding a lead strap with the right hand quite close to the halter with the strap neatly, but naturally (preferably not coiled), gathered in one or both hands. Holding close to the halter or with the hand inside the halter ensures a more secure control of an animal.
- b. Animal should lead readily and respond quickly to the exhibitor. It is the responsibility of the exhibitor to respond quickly with the animal to the signals given by the judge.
- c. Halter of right type for showing dairy cattle, fitting properly, and placed correctly on animal. The nose band should fit across the bridge of the nose midway between the eyes and the muzzle. A leather halter with leather chain lead is preferred.
- d. As the judge studies your animal, the preferred method of leading is walking slowly facing the animal and holding the lead strap in the left hand with the remainder of it neatly, but naturally, gathered in one or both hands. At all other times, walk facing forward at a quicker pace. When given the signal to pull into line, move quickly to that position in the ring.
- e. Lead at a comfortable pace with the animal's head held high enough for impressive style, attractive carriage, and graceful walk.

Never allow a large gap to occur between your animal and the one ahead of you. Do not crowd the exhibitor ahead of you nor lead in front of that animal so it cannot be seen by the judge.

2. Posing — 15 points

- a. When posing and showing an animal, stay on the animal's left side, and stand faced at an angle to her in a position far enough away to see stance of her feet and her topline.
 - b. Pose animal with feet squarely placed. The hind leg nearest the judge is posed slightly behind the other one when showing heifers or bulls. The hind leg nearest the judge should be far enough ahead to allow the judge to see both the fore and rear udder when exhibiting cows.
 - c. Animal should be trained so the exhibitor can move quickly and easily into the correct pose. The position of the rear legs should be reversed when the judge walks around to view the animal from the other side. Do not overshadow. When judge is observing the animal, let it stand when posed reasonably well.
 - d. Face animal uphill, if possible, with her front feet on a slight incline.
 - e. Always move quickly into line when given the signal by a judge. Neither crowd the exhibitor next to you nor leave enough space for another animal when you lead into a side-by-side position.
 - f. Animal may be backed out of line when judge requests that her placing be changed. Move animal back by exerting pressure on the shoulder point with the thumb and finger of the right hand while pushing back with the halter. Many prefer to lead animal forward and around the end of the line or back through the line. Do not lead animal between the judge and an animal being observed. To move the animal ahead, pull gently on the lead strap.
 - g. Do most of the showing with the halter lead strap, and avoid stepping on animal's hind feet to move them.
 - h. Be natural. Overshadowing, undue fussing and maneuvering are objectionable.
- #### 3. Show animal to best advantage — 10 points
- a. Quickly recognize the conformation faults of the animal you are leading and show to overcome them. You may be asked to exchange with another and show a different animal.
 - b. For the judge to evaluate the animal properly, it is vital that the exhibitor know basic information such as birth date, fresh date, breeding date, and due date. Knowledge of this information will help show the animal to best advantage.
- #### 4. Poise, alertness, and attitude — 10 points
- a. Keep an eye on your animal, and be aware of the position of the judge at all times. Do not be distracted by people or activities outside the ring.
 - b. Show animal at all times and not yourself.
 - c. Respond rapidly to requests from the judge and officials.
 - d. Be courteous and sportsmanlike at all times.
 - e. Keep showing until the entire class has been placed and the judge has given the reasons.

Copyright 2004 by W.D. Hoard & Sons Company, Fort Atkinson, Wisc.

PDCA Dairy Cow Unified Score Card

Appendix B

*All traits are listed in priority order.

1. Frame- 15

The skeletal parts of the cow, with the exception of feet and legs, are evaluated.

Rump (5 points): Should be long and wide throughout. Pin bones should be slightly lower than hip bones with adequate width between the pins. Thurls should be wide apart. Vulva should be nearly vertical and the anus should not be recessed. Tail head should set slightly above and neatly between pin bones with freedom from coarseness. Front End (5 points): Adequate constitution with front legs straight, wide apart, and squarely placed. Shoulder blades and elbows set firmly against the chest wall. The crops should have adequate fullness blending into the shoulders. Back/Loin (2 points): Back should be straight and strong, with loin broad, strong, and nearly level. Stature (2 points): Height including length in the leg bones with a long bone pattern throughout the body structure. Height at withers and hips should be relatively proportionate. Age and breed stature recommendations are to be considered. Breed Characteristics (1 point): Exhibiting overall style and balance. Head should be feminine, clean-cut, slightly dished with broad muzzle, large open nostrils and strong jaw.

2. Dairy Strength- 25

The physical evidence of milking ability is evaluated. Major consideration is given to general openness and angularity while maintaining strength, width of chest, spring of fore rib, and substance of bone without coarseness. Body condition should be appropriate for stage of lactation. Listed in priority order, the descriptions of the traits to be considered are as follows:

Ribs (8 points): Wide apart. Rib bones wide, flat, deep, and slanted towards the rear. Well sprung, expressing fullness and extending outside the point of elbows. Chest (6 points): Deep and wide floor showing capacity for vital organs, with well-sprung fore ribs. Barrel (4 points): Long, with adequate depth and width, increasing toward the rear with a deep flank. Thighs (2 points): Lean, incurving to flat and wide apart from the rear. Neck (2 points): Long, lean, and blending smoothly into shoulders; clean-cut throat, dewlap, and brisket. Withers (2 points): Sharp with chine prominent. Skin (1 point): Thin, loose, and pliable.

3. Rear feet & legs - 20

Feet and rear legs are evaluated. Evidence of mobility is given major consideration. Listed in priority order, the descriptions of the traits to be considered are as follows:

Movement (5 points): The use of feet and rear legs, including length and direction of step. When walking naturally, the stride should be long and fluid with the rear feet nearly replacing the front feet. Rear Legs- Side View (3 points): Moderate set (angle) to the hock. Rear Legs-Rear View (3 points): Straight, wide apart with feet squarely placed. Feet (3 points): Steep angle and deep heel with short, well-rounded closed toes. Thurl Position (2 points): Near central placement between the hip and pin bones. Hocks (2 points): Adequate flexibility with freedom from swelling. Bone (1 point): Flat and clean with adequate substance. Pasterns (1 point): Short and strong with some flexibility, having a moderate, upright angle.

4. Udder- 40

The udder traits are evaluated. Major consideration is given to the traits that contribute to high milk yield and a long productive life. Listed in priority order, the descriptions of the traits to be considered are as follows:

Udder Depth (10 points): Moderate depth relative to the hock with adequate capacity and clearance. Consideration is given to lactation number and age. Rear Udder (9 points): Wide and high, firmly attached with uniform width from top to bottom and slightly rounded to udder floor. Teat Placement (5 points): Squarely placed under each quarter, plumb and properly spaced. Udder Cleft (5 points): Evidence of a strong suspensory ligament indicated by clearly defined halving. Fore Udder (5 points): Firmly attached with moderate length and ample capacity. Teats (3 points): Cylindrical shape; uniform size with medium length and diameter; neither short nor long is desirable. Udder Balance and Texture (3 points): Udder floor level as viewed from the side. Quarters evenly balanced; soft, pliable, and well collapsed after milking. (Note: In the Holstein breed, an equal emphasis is placed on fore and rear udder (7 points each). All other traits are the same as listed above.)

Total Points possible - 100

Dairy Cow Unified Score Card. The Purebred Dairy Cattle Association. Brattleboro, VT . 2010.

All exhibitors must submit their entry forms and the Summary of Entries (Form A). This summary is designed to keep groups together and to assist with stalling animals together at Michigan Dairy Expo. Please send this summary with your check for entries. **(One summary per farm/family is adequate)**.

4-H Youth Dairy Days:

All youth participating in the 4-H Youth Dairy Days show (Tuesday) must complete Form B. Form A, The summary of entries should be completed as well. One per family/farm is adequate. Be sure to include birth date of youth exhibitors as well as all animal entry information on this single form. **If youth have not completed the online media/medical treatment forms for 4-H** -- they must complete the Media/Medical Treatment form and return it with your entries. (If youth have entered educational contests and completed this form... or if they completed the online enrollment in with the county, no need to send another copy). If you are exhibiting a cow in milk production you must also complete and return the Milk Producer Agreement. If you are not participating in the Open/Jr. shows on Thursday evening or Friday of Michigan Dairy Expo, no additional forms is required.

Open show:

All open show exhibitors must complete one section of Form C (a total of 4 open show exhibitors may be listed on this form). Be sure to provide complete address information. One section of Form D must be completed for each animal that will be exhibited during the Open Show on Thursday evening or Friday of Michigan Dairy Expo. Be sure to include the name of the Exhibitor as well as the Herd Unit name for credit for exhibitor points. Be sure that the Exhibitor Name on this animal entry form is exactly as it appears on the exhibitor entry (form C). Complete the Milk Producer Agreement and return with your entries as well as the Summary (form A).

Accurate information on Form A is critical for stalling purposes. Each animal should be included only 1 time on a single Form A. One form for each exhibitor/farm is needed. Feel free to contact Carla McLachlan, MCLACHL2@msu.edu or 517-432-5402 if you have questions about completing this entry forms.

Entry Deadlines

Make checks payable to "Michigan PDCA"

Entries must be mailed to: MICHIGAN DAIRY EXPO, Anthony Hall, 474 S. Shaw Lane, East Lansing, MI 48824

Michigan Dairy Days 4-H Youth Show Entry Fee

Entry Fee	JUNE 23 (Postmarked on or before June 23)	\$5.00 per animal
Late Entry Fee	JULY 7 (Postmarked June 24 through July 7)	\$10.00 per animal
	JULY 19 (July 8 through July 19)	\$25.00 per animal

a. All animals entered in 4-H Youth Dairy Days must be in place by Monday, July 18 at 5:00 p.m. Cattle will be released at the conclusion of their breed show. Please check in the show office to determine if stalls must be cleaned before leaving. Entries close at 5:00 p.m. on Monday July 18th. Animals and youth planning to participate in showmanship must be checked in on Monday evening to show in Dairy Days Show!

b. Animals need not be registered or owned by the exhibitor to be exhibited in this show.

Open Show Entry Fee

Entry Fee	JUNE 23 (Postmarked on or before June 23)	\$25.00 per animal
Late Entry Fee	JULY 7 (Postmarked June 24 through July 7)	\$35.00 per animal
	JULY 19 (July 8 through July 19)	\$50.00 per animal
Dual Show (Holstein and Red & White Shows) Entry Fee ***		\$10.00 additional per animal

***Additional fee after initial entry for any R&W and Holsteins that want to show in both the Holstein and R&W open shows.

a. All animals must be in place by Wednesday, July 19 at 7:00 a.m. Cattle will be released at the conclusion of their breed show. Entries close at 4:00 p.m. on Wednesday, July 19.

ALL EXHIBITORS THAT WILL HAVE MILKING INDIVIDUALS
MUST COMPLETE TO PUT MILK IN TANK



2017

(Please return this form with your entries.)

All milk picked up from the bulk tank is sold during Michigan Dairy Expo or Spring Dairy Expo. The income generated from the sale of milk helps to keep the costs of exhibiting cattle at the MSU Pavilion down. We strongly encourage exhibitors that have cows to contribute their milk to the bulk tank. Exhibitors are welcome to use the parlor to milk their cows or if they prefer to milk their cows in their pack, it is allowed. Milk cans are available to transport the milk to the bulk tank. Since the milk is sold, we ask that all exhibitors who plan on placing their milk in the bulk tank abide by the following:

1. I am exhibiting lactating dairy animals at the Michigan Dairy Expo or Spring Dairy Expo, East Lansing, MI.
2. Any milking individuals I am exhibiting, whereas I will be contributing their milk to the Michigan Dairy Expo/Spring Dairy Expo bulk tank, abide by the following guidelines for their milk being eligible for sale.
 - Animals that may have been treated with antibiotics are past the withholding period AND have tested clear for drug residues.
 - The animals producing milk for sale have not been treated with Recombinant Bovine Somatotropin (rBST) within the past 30 days.

3. I agree that I will NOT place milk from any of my lactating animals that does not meet these requirements, or other generally assumed conditions for grade A fluid milk sales.

I authorize Michigan Dairy Expo and the Spring Dairy Expo to disclose the fact that I have executed this certification and agreement to MMPA customers to whom my milk is marketed. MMPA may also disclose the fact that I have made this certification and agreement to government or regulatory entities if required to do so by law. I declare, under penalty of perjury, that these statements are my true statements and I agree to the undertakings set forth.

Exhibitor name (please print): _____ Phone: _____

Farm Address : _____

State Permit Holder's Signature: _____

State Permit No. _____ Date: _____

Form must be completed each year.
This form will be kept on file for one
year for both the
MI Dairy Expo as well as the
Spring Dairy Events.

(Please return this form with your entries.)

Michigan Dairy Expo/ 4-H Youth Dairy Days-- Summary of Entries - Form A

All Exhibitor Groups or individuals should complete this form.

One of these forms should be sent with each entry group. If you are completing and sending your entries individually, please complete this form as well.

Exhibitor /Group Name:	
Phone:	Email:
Please list all exhibitors in your group:	
All exhibitors in your group will be stalled together. Do you have additional stalling requests:	

Please complete 1 line for each animal entered in the Open and/or 4-H Youth Dairy Days show (s). Each animal should only be listed one time on this summary form.

Animal Name/ID #	Breed	Cow	Heifer	Bull	Open Show Fee	Adn'l Fee R&W \$10.00/ea	4-H Youth Dairy Days	Total Fees
							Total Cattle Fees	\$\$
Camping Fees - \$20/lot /night					# of lots	# of nights		\$\$
					Total Fees:			\$\$

Make Checks Payable to: MI PDCA

Send to: MI Dairy Expo, 474 S. Shaw Lane, Rm 1287, East Lansing, MI 48824

Entry Deadline: Postmarked by June 23, 2017. Entries sent after this date must include late fees.

All 4-H Youth Dairy Days Exhibitors must complete this entry form for the Tuesday Show.

Please include each exhibitor on a separate form.

Be sure to note group classes you are planning to show your animals in.

Exhibitor Name:	
Complete Address:	City: Zip Code:
Phone:	Email:
Exhibitor Birth date: MO/DAY/YEAR	County:

Please complete 1 line for each animal entered in the Dairy Days show.

Note: One on one changes only will be allowed at check in.

Animal Name/ID #	Breed	Birthdate	Class #	Group Class #

If you would like to participate in Showmanship, but will not be showing an animal in a breed class, please complete the top portion and sign this form. Each exhibitor will be responsible for locating their own Showmanship animal, and each animal may only be used in showmanship one time.

All Exhibitors who enter animals will be automatically entered in showmanship.

* I have read and understand the rules and guidelines governing the Michigan Dairy Expo and 4-H Youth Dairy Days show and the respective breed and dairy Shows. By signing, I agree to abide by those rules and all information present on the entry form is correct.

Signature: _____

Send this form as well as the summary of entry and media release to:

Make Checks Payable to: MI PDCA

Send to: MI Dairy Expo, 474 S. Shaw Lane, Rm 1287, East Lansing, MI 48824

Entry Deadline: Postmarked by June 23, 2017. Entries sent after this date must include late fees.

Youth Code of Conduct/ Media Medical Release Form



Participant Name: _____

County of 4-H Participation: _____ Program Year: 20____ - 20____

Instructions: This two-page form is required for participation in Michigan State University Extension 4-H youth programs. Each section requires a separate authorization.

SECTION 1- Required

Michigan 4-H Code of Conduct

Participation in Michigan 4-H programs is subject to the observance of the program rules. Any participant who knowingly violates this Code of Conduct is subject to discipline, up to and including removal from the activity he or she is participating in (at his or her own expense) or the entire county 4-H program. Determination of disciplinary action shall be done with input from the volunteers and staff overseeing the program or activity. Final decisions about discipline will be made by the MSU Extension staff.

Michigan 4-H members will:

- Show respect for, and cooperate with, fellow members, volunteers and staff.
- Follow 4-H policies and procedures when participating in any 4-H sponsored event.
- Under no circumstances, commit or threaten violence toward any individual, group or the program.
- Under no circumstances, possess, sell or consume alcohol or possess, sell or use controlled substances at an MSU Extension 4-H youth activity or event.
- Under no circumstances, attend or participate in an MSU Extension 4-H youth activity or event under the influence of alcohol and/or controlled substances including tobacco, electronic cigarettes, etc.
- Under no circumstances, bring dangerous or unauthorized materials (such as explosives, weapons or similar items) to an MSU Extension 4-H youth activity or event.
- Abstain from harassment or bullying of another participant, volunteer or staff member (either in face to face interactions, through social media or other communication venues), particularly when the behavior is disrespectful as regards a person's gender, race, age, sexual orientation, religion, national origin, disability or appearance.
- Not cheat or falsely represent efforts related to 4-H project activities.

I have read and I understand the Michigan 4-H Youth Code of Conduct. I agree to abide by the rules stated above. I understand I may be removed as a participant from the activity or program, if I fail to follow these rules.

Participant Signature: _____ Date: _____

Parent/Guardian Signature: _____ Date: _____

Parent/Guardian must sign if participant is under 18.

SECTION 2- Required

Evaluation Acknowledgement

As a participant in the Michigan State University Extension/ 4-H program, your child may be asked to help with the evaluation of the program. Your child may be asked to complete a short survey about what he/she learned or did as a result of the program. Surveys could be given before the program begins and/or after the program has ended. Surveys typically take no more than 10 minutes to complete. All surveys are confidential. Youth are not required to participate in a survey. If you or your child does not wish to participate, it will not affect involvement in any programs of Michigan State University. If you do not want your child to participate in program evaluations or have questions about the evaluation, contact your local 4-H coordinator at the MSU Extension Office.

Parent/Guardian Signature: _____ Date: _____

Participant must sign if over 18.

MICHIGAN STATE UNIVERSITY | Extension

MSU is an affirmative action, equal opportunity employer. Michigan State University Extension programs and materials are open to

Youth Code of Conduct/ Media Medical Release Form

Participant Name: _____

County of 4-H Participation: _____ Program Year: 20____ - 20____

SECTION 3- Required to Complete. Authorization is Optional **Media Release**

I authorize Michigan State University Extension/4-H to record my image and/or voice for use by Michigan State University Extension or its assignees in research, education, and promotional programs. I understand and agree that these audio, video, film, and/or print images may be edited, duplicated, distributed, reproduced, broadcasted, and/or reformatted in any form and manner without payment of fees in perpetuity.

_____ I do authorize. _____ I do not authorize.

Parent/Guardian Signature: _____ Date: _____

Participant must sign if over 18.

SECTION 4- Required **Medical Information**

Participant's full legal name: _____

Birth date: _____ Phone: _____

Parent phone home: (_____) _____ Parent phone work: (_____) _____

Parent phone cell: (_____) _____

Mailing address: _____

Primary care physician's name: _____ Physician's phone: (_____) _____

Physician's address: _____

INFORMATION NEEDED ABOUT PARTICIPANT (Required):

Yes No If yes, please list/explain below. Attach additional sheets if needed.
☐ ☐ Does the participant have any chronic health problem or illness?

☐ ☐ Does he or she have any acute illness now?

☐ ☐ Has the participant been treated recently for some medical problem?

☐ ☐ Is the participant taking any medications for treatment of a medical problem?

☐ ☐ Does the participant have any allergies to medication or local anesthetics?

☐ ☐ Does he or she have any allergies?

Date of child's last tetanus shot: _____

HEALTH INSURANCE INFORMATION (Strongly Encouraged):

Policy holder's name and relationship to participant: _____

Policy holder's address: _____

Please attach a photocopy of both sides of your insurance card (preferred) OR complete the information requested here:

Insurance company phone number: (_____) _____

All policy numbers (please identify): _____

If you have HMO insurance, please list emergency treatment authorization phone number: (_____) _____

Employer's name and address: _____

SECTION 5- Required

Official Medical Treatment Authorization

I recognize that while attending this program, medical treatment on an emergency basis may be necessary for my child, and I further recognize that volunteers or staff overseeing the program may be unable to contact me for my consent for emergency medical care. I do hereby consent in advance to such emergency care, including hospital care, as may be deemed necessary under the circumstances and to assume the expenses of such care. I also authorize the medical facility to release any and all information required to complete insurance claims and also authorize insurance payment directly to the medical facility.

Parent/Guardian Signature: _____ Date: _____

Participant must sign if over 18.

MSU is an affirmative-action, equal-opportunity employer. Michigan State University Extension programs and materials are open to all without regard to race, color, national origin, gender, gender identity, religion, age, height, weight, disability, political beliefs, sexual orientation, marital status, family status or veteran status.

Michigan Dairy Expo - Open Show Exhibitor Entry - Form C

All Open Show exhibitors must be included on this form .

Each open show exhibitor should complete this section of the form. Additionally the Open Show Animal Entry from (form D) must be completed for each animal being exhibited in the shows on Thursday and Friday during Dairy Expo. A total of 4 open show exhibitors may be completed on this form. Please make additional copies of this page if needed.

Exhibitor Name:

Complete Address:

Phone:

Email:

Junior Entry? ☐ Yes ☐ No

T Shirt Size Requested:

Birthdate (Junior):

* I have read and understand the rules and guidelines governing the Michigan Dairy Expo and the respective breed and dairy Shows. By signing, I agree to abide by those rules and all informationa present on the entry form is correct.

Signature:

Exhibitor Name:

Complete Address:

Phone:

Email:

Junior Entry? ☐ Yes ☐ No

T Shirt Size Requested:

Birthdate (Junior):

* I have read and understand the rules and guidelines governing the Michigan Dairy Expo and the respective breed and dairy Shows. By signing, I agree to abide by those rules and all informationa present on the entry form is correct.

Signature:

Exhibitor Name:

Complete Address:

Phone:

Email:

Junior Entry? ☐ Yes ☐ No

T Shirt Size Requested:

Birthdate (Junior):

* I have read and understand the rules and guidelines governing the Michigan Dairy Expo and the respective breed and dairy Shows. By signing, I agree to abide by those rules and all informationa present on the entry form is correct.

Signature:

Exhibitor Name:

Complete Address:

Phone:

Email:

Junior Entry? ☐ Yes ☐ No

T Shirt Size Requested:

Birthdate (Junior):

* I have read and understand the rules and guidelines governing the Michigan Dairy Expo and the respective breed and dairy Shows. By signing, I agree to abide by those rules and all informationa present on the entry form is correct.

Signature:

Up to 4 animals may be entered on the form, please make additional copies if needed.

Michigan Dairy Expo - Open Show Animal Entry - Form D

Animal Name:		Date of Birth: (MM/Day/YR)		Breed:	
Registration Number:		Tattoo Number		Class Number and Name	
Group Class Number (s) and Name:					
365 Milk Record of Cow Herself:					
Owner/Exhibitor:		Breeder:		Breed & Owned? <input type="checkbox"/> Yes <input type="checkbox"/> No Jr Breed & Owned? <input type="checkbox"/> Yes <input type="checkbox"/> No RW & Hol Show Dual Entry <input type="checkbox"/> Yes	
Herd Unit (Exhibitor Points):		*Red & White Dairy Cattle & Holsteins - To show in both shows, there is an additional \$10 entry fee for the second entry			<input type="checkbox"/> Yes

Animal Name:		Date of Birth: (MM/Day/YR)		Breed:	
Registration Number:		Tattoo Number		Class Number and Name	
Group Class Number (s) and Name:					
365 Milk Record of Cow Herself:					
Owner/Exhibitor:		Breeder:		Breed & Owned? <input type="checkbox"/> Yes <input type="checkbox"/> No Jr Breed & Owned? <input type="checkbox"/> Yes <input type="checkbox"/> No RW & Hol Show Dual Entry <input type="checkbox"/> Yes	
Herd Unit (Exhibitor Points):		*Red & White Dairy Cattle & Holsteins - To show in both shows, there is an additional \$10 entry fee for the second entry			<input type="checkbox"/> Yes

Animal Name:		Date of Birth: (MM/Day/YR)		Breed:	
Registration Number:		Tattoo Number		Class Number and Name	
Group Class Number (s) and Name:					
365 Milk Record of Cow Herself:					
Owner/Exhibitor:		Breeder:		Breed & Owned? <input type="checkbox"/> Yes <input type="checkbox"/> No Jr Breed & Owned? <input type="checkbox"/> Yes <input type="checkbox"/> No RW & Hol Show Dual Entry <input type="checkbox"/> Yes	
Herd Unit (Exhibitor Points):		*Red & White Dairy Cattle & Holsteins - To show in both shows, there is an additional \$10 entry fee for the second entry			<input type="checkbox"/> Yes

Animal Name:		Date of Birth: (MM/Day/YR)		Breed:	
Registration Number:		Tattoo Number		Class Number and Name	
Group Class Number (s) and Name:					
365 Milk Record of Cow Herself:					
Owner/Exhibitor:		Breeder:		Breed & Owned? <input type="checkbox"/> Yes <input type="checkbox"/> No Jr Breed & Owned? <input type="checkbox"/> Yes <input type="checkbox"/> No RW & Hol Show Dual Entry <input type="checkbox"/> Yes	
Herd Unit (Exhibitor Points):		*Red & White Dairy Cattle & Holsteins - To show in both shows, there is an additional \$10 entry fee for the second entry			<input type="checkbox"/> Yes

Schedule of Events

Monday, July 17

1:00 p.m. – 5:00 p.m.

Cattle move-in begins. Dairy Days exhibitors must have cattle in place by Monday at 5:00 p.m. Open show exhibitors are encouraged to arrive Monday and must be in place by Wednesday at 7:00 a.m. NO early arrival allowed. NO MOVE-IN will be allowed Tuesday afternoon.

1:00 p.m. – 4:00 p.m.

MMPA interviews – Classroom 101A

3:00 p.m.

4-H Dairy Management Contest Coaches Meeting

4:00 p.m.

4-H Dairy Management Contest

6:00 p.m.

Cattle exhibiting in Michigan Dairy Days Youth Show must be checked in to the show office before 6:00 p.m. All showmanship exhibitors must check in by this time as well.

Tuesday, July 18

7:30 a.m.

Michigan Dairy Days 4-H Youth Show (beginning with Showmanship)

2:00 p.m. – 9:00 p.m.

Please do not move-in any cattle, drive-through or unload/load out any trailers during this time.

4:30 p.m.

Michigan Dairy and Livestock Expo Sale-orientation Reception (RSVP Event)

5:00 p.m.

All final Quiz Bowl teams must be submitted in writing to the show office by 5 p.m. If no changes are submitted, teams will be those listed on the original entry form.

5:00 p.m.

Dairy Youth Pizza Social - All Dairy Days participants are invited!!! (Show Arena – Bleacher Area)

6:00 p.m.

Michigan Dairy and Livestock Expo Sale-orientation Auction (MSU Pavilion Sale Auditorium)

8:30 p.m. – 9:00 p.m.

State Dairy Judging Coaches Meeting - Classroom B

Wednesday, July 19

7:00 a.m.

Open Show Cattle must be in place

7:45 a.m. – 3:00 p.m.

State Youth Dairy Judging Contest

9:30 a.m. – 2:30 p.m.

The Great Dairy Adventure- Consumer Education Day

11:00 a.m. – 4:00 p.m.

Open Show Cattle - Breed Association Entry Check-in at Classroom D

Cattle exhibiting in the Open Breed Shows must check their registration papers in by 4:00 p.m.

4:00 p.m.

Close of ALL Open Show Entries

3:30 p.m.

Jr Jersey Meeting

5:00 p.m.

Jr Holstein Meeting

6:00 p.m.

The Party Barn will include games and fun for youth!! (Junior Show Shirts will be distributed.)

8:30 p.m.

Ice Cream Social

8:30 p.m.

All-Michigan Open Show Exhibitor's Meeting (Classroom C)

Thursday, July 20

7:30 a.m.

Dairy Youth Quiz Bowl Coaches Meeting

8:30 a.m.

Dairy Youth Quiz Bowl Contest

5:30 p.m.

Michigan Dairy Expo Celebration Picnic followed by Dairy Youth and 4-H Recognition Program

8:00 p.m.

32nd Annual Michigan Holstein Futurity Ring 1

9:00 p.m.

Ice Cream Social Celebrating Michigan's Dairy Industry

Friday, July 21

8:30 a.m.

MICHIGAN DAIRY EXPO SHOWMANSHIP

Ring 1 Holstein Ring 2 Jersey Ring 3 - All Other Breeds

9:15 a.m.

MICHIGAN DAIRY EXPO HEIFER CLASSES - ALL BREEDS

** All heifers, dry cows and bulls will show in the morning.

Ring 1 - Holstein Ring 2 - Jersey

Ayrshire, Brown Swiss, Guernsey, Milking Shorthorn, Red & White, (starting with the breed with largest entry numbers will follow Holstein and/or Jersey in the first available ring.***)

~11:30 a.m.

MICHIGAN DAIRY EXPO SUPREME JUNIOR CHAMPION (conclusion of the heifer breed shows)

*Supreme Junior Champion of the Junior Show will be followed by Supreme Junior Champion of the Open Show.

All-Breeds Pee-Wee Showmanship

~12:00 p.m.

MICHIGAN DAIRY EXPO MILKING COW CLASSES - ALL BREEDS

1:00 p.m.

Ring 1 Holstein Ring 2 Jersey

Ayrshire, Brown Swiss, Guernsey, Milking Shorthorn, Red & White (starting with the breed with largest entry numbers will follow Holstein and/or Jersey in the first available ring.***)

~3:00 p.m.

MICHIGAN DAIRY EXPO SUPREME CHAMPION

*Supreme Grand Champion of the Junior Show will be followed by Supreme Grand Champion of the Open Show.

**Open show start times are subject to change depending on the number of entries.

*** Time and order of color breed shows may be adjusted depending on final entry numbers.

Michigan State University
Department of Animal Science
MI Dairy Expo
474 S. Shaw Lane Room 1287
East Lansing, MI 48824



Entry Deadlines

Make checks payable to "Michigan PDCA."

Entries must be mailed to: MICHIGAN DAIRY EXPO, Anthony Hall, 474 S. Shaw Lane, East Lansing, MI 48824

Michigan Dairy Days 4-H Youth Show Entry Fee

Entry Fee	JUNE 23 (Postmarked on or before June 23)	\$5.00 per animal
Late Entry Fee	JULY 7 (Postmarked June 24 through July 7)	\$10.00 per animal
	JULY 19 (July 8 through July 19)	\$25.00 per animal

a. All animals entered in 4-H Youth Dairy Days must be in place by Monday, July 18 at 5:00 p.m. Cattle will be released at the conclusion of their breed show. Please check in the show office to determine if stalls must be cleaned before leaving. Entries close at 5:00 p.m. on Monday July 18th. Animals and youth planning to participate in showmanship must be checked in on Monday evening to show in Dairy Days Show!

b. Animals need not be registered or owned by the exhibitor to be exhibited in this show.

Open Show Entry Fee

Entry Fee	JUNE 23 (Postmarked on or before June 23)	\$25.00 per animal
Late Entry Fee	JULY 7 (Postmarked June 24 through July 7)	\$35.00 per animal
	JULY 19 (July 8 through July 19)	\$50.00 per animal
Dual Show (Holstein and Red & White Shows) Entry Fee ***		\$10.00 additional per animal

***Additional fee after initial entry for any R&W and Holsteins that want to show in both the Holstein and R&W open shows.

a. All animals must be in place by Wednesday, July 19 at 7:00 a.m. Cattle will be released at the conclusion of their breed show. Entries close at 4:00 p.m. on Wednesday, July 19.